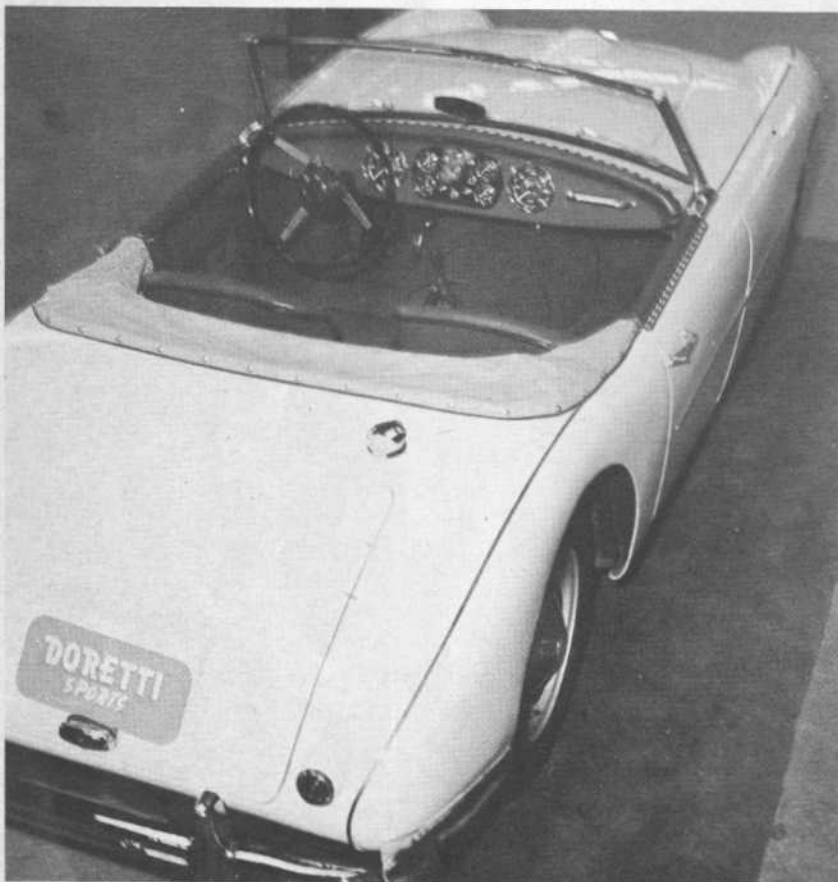




Swallow Doretti



Great Britain

Using a Triumph TR2 engine and other Triumph components, the **Swallow Doretti** made its debut last year and met with instant acclaim in Europe. Built by a firm with long experience in aviation engineering, the **Doretti's** body is aluminum with a steel undershell. Extremely good looking, it has been designed for general sports car use as well as a good competition machine. Unlike many sports cars, the **Doretti** is an all-weather job and can be driven in comfort with top up. Its performance can be compared to the Triumph TR2.

Manufacturer: **Swallow Coachbuilding Co. Ltd.**
The Airport, Walsall,
Staffordshire, England.